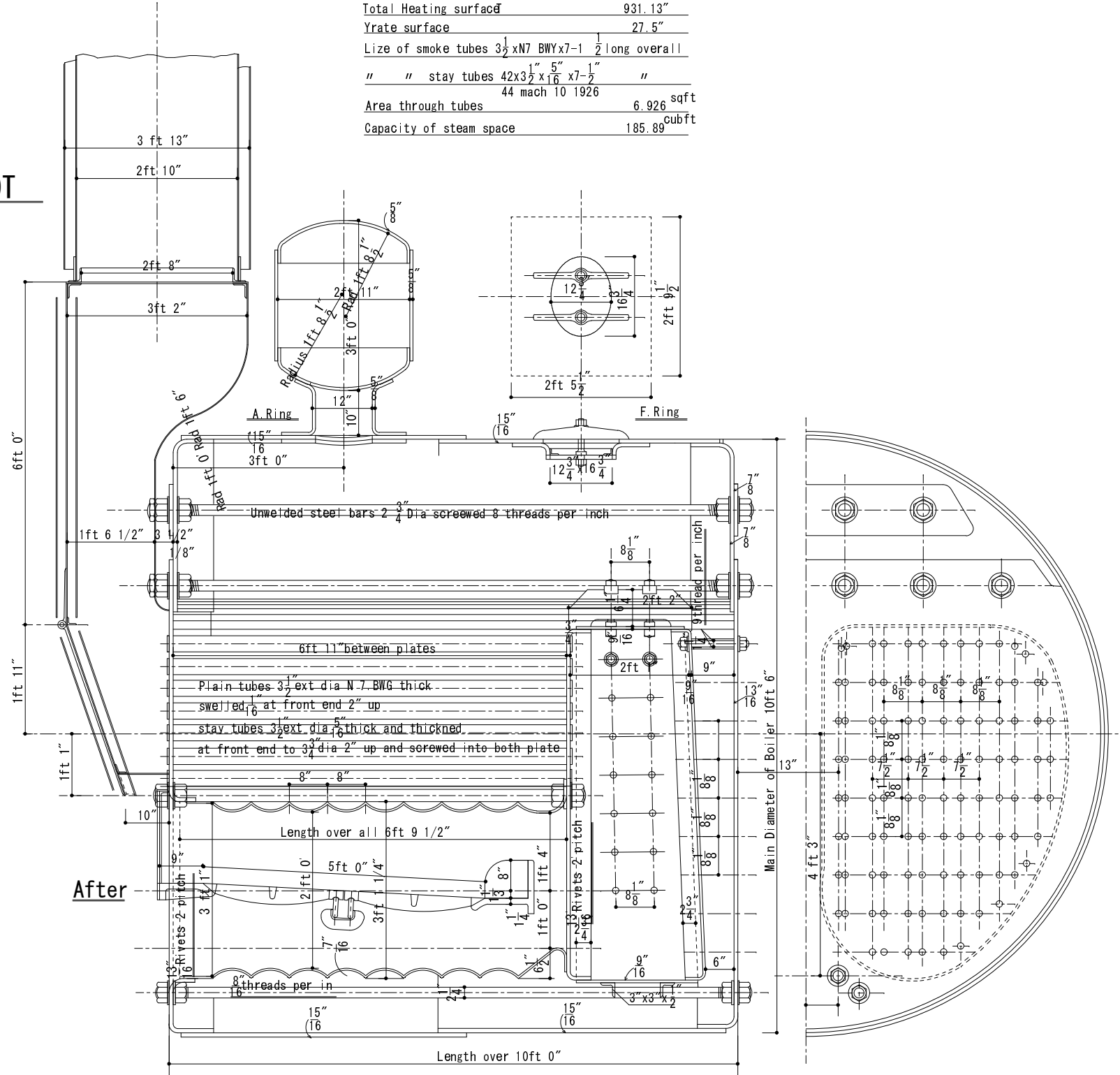
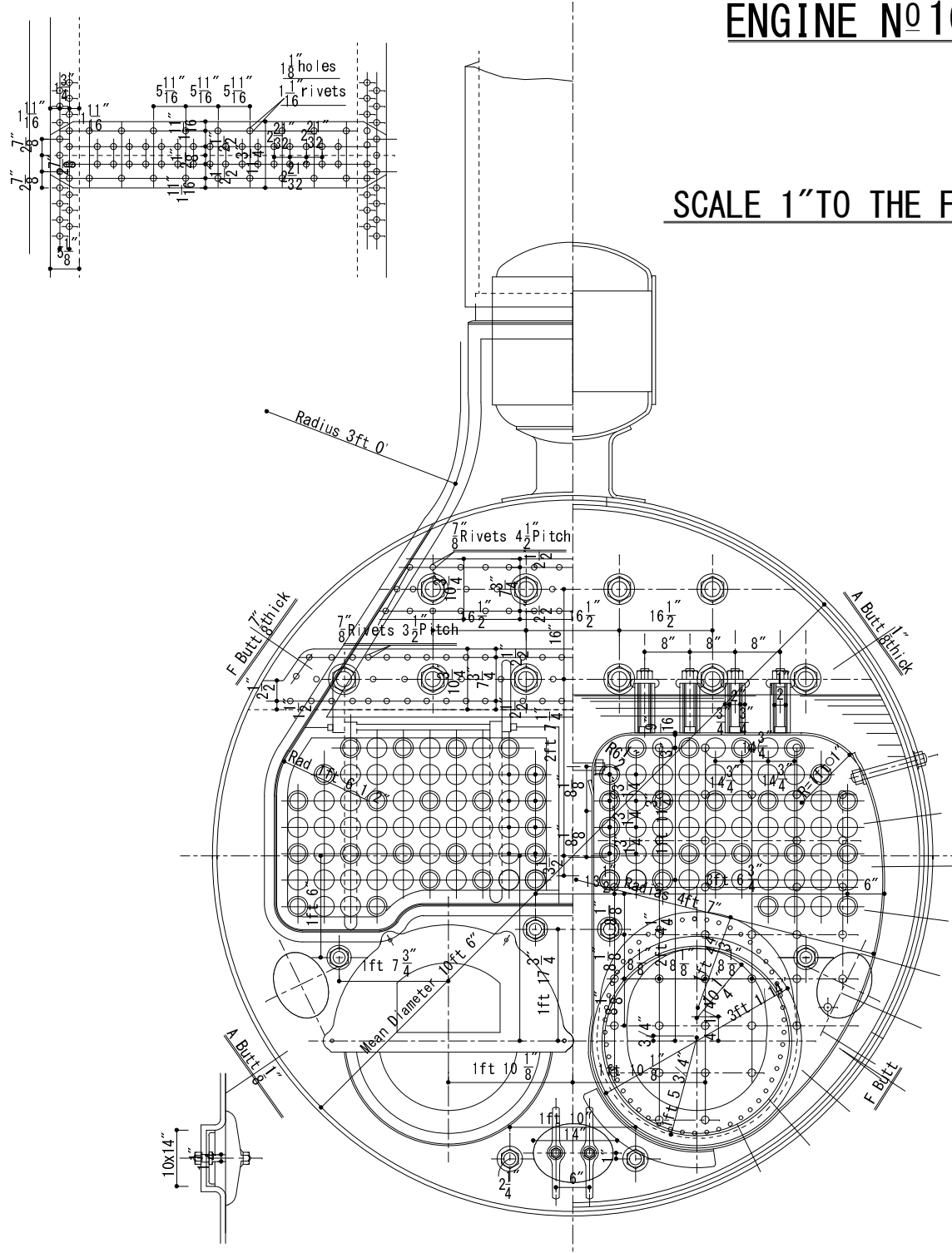


# MAIN BOILER FOR ENGINE N<sup>o</sup> 101

SCALE 1" TO THE FOOT

Dimension of Boiler	
Working Pressure	160 pound per sq in
Mean Diameter of Boiler	10ft 6"
Length of boiler	10ft 0"
Heating surface in tubes	760.1 sqft
" " " furnace	60.69"
" " " combustion chamber	84.34"
" " " back plate	26"
Total Heating surface	931.13"
Grate surface	27.5"
Size of smoke tubes	3 1/2 x N7 BWY x 7-1/2 long overall
" " stay tubes	42 x 3 1/2 x 1 5/16 x 7-1/2 "
Area through tubes	44 mach 10 1926 6.926 sqft
Capacity of steam space	185.89 Cubft



月島丸ボイラ・プロペラ設計図