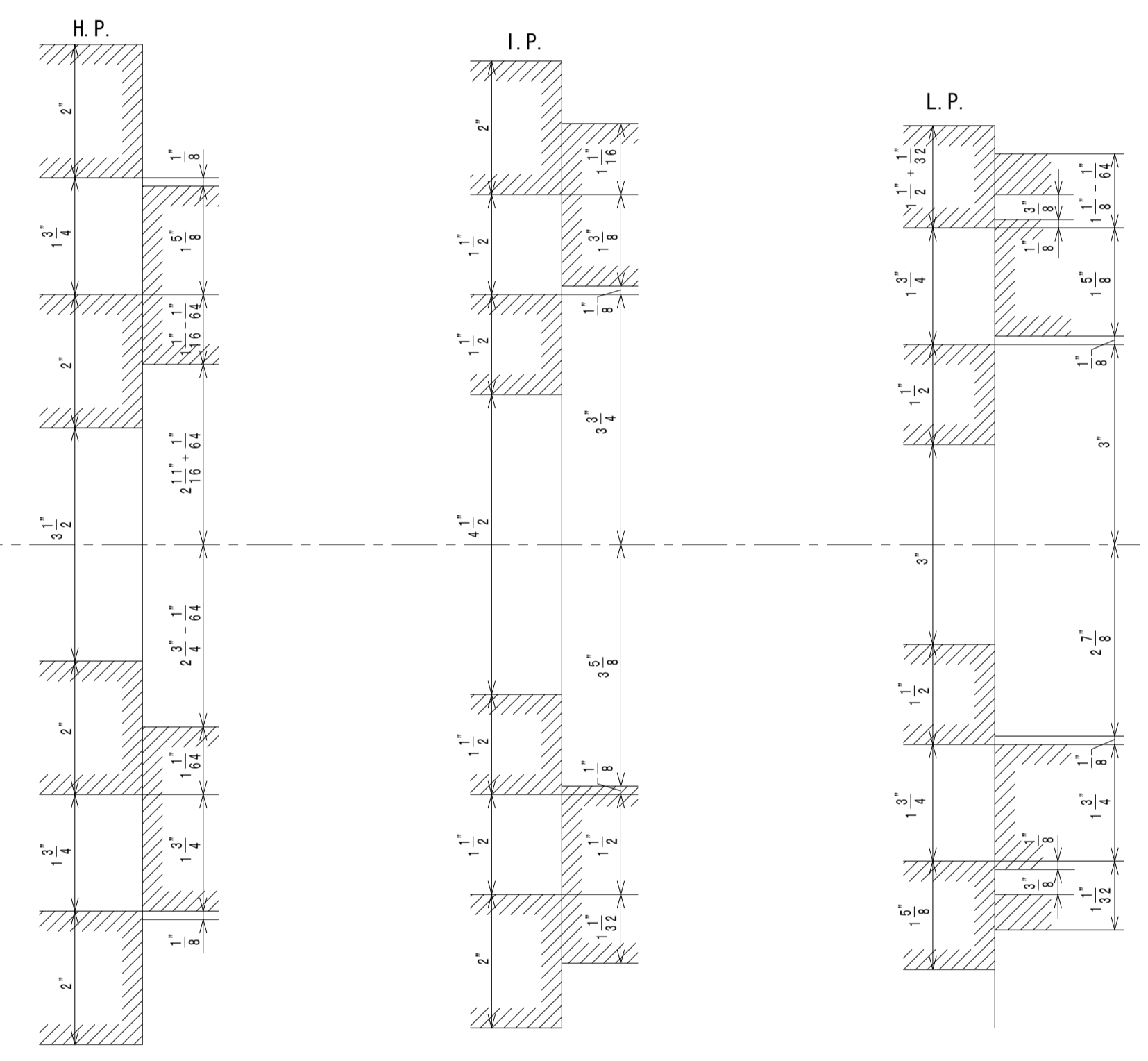


**VALVE DIAGRAM**  
**FOR No\_ 586**



	H. P.		I. P.		L. P.	
	TOP	BOT	TOP	BOT	TOP	BOT
LEAD	$\frac{3}{32}$	$\frac{1}{8}$	$\frac{1}{8}$	$\frac{3}{32}$	$\frac{3}{16}$	$\frac{1}{4}$
OUT SIDE LAP	$\frac{1}{16}$	$\frac{1}{64}$	$\frac{1}{16}$	$\frac{1}{32}$	$\frac{1}{8}$	$\frac{1}{32}$
IN SIDE LAP	$\frac{1}{8}$	$\frac{1}{8}$	$\frac{1}{8}$	$\frac{1}{8}$	$\frac{1}{8}$	$\frac{1}{8}$
FULL OPENING	$\frac{15}{16}$	$\frac{1}{64}$	$\frac{15}{16}$	$\frac{1}{32}$	$\frac{7}{8}$	$\frac{1}{32}$
CUT OFF	16.4375	14.5625	16.0	13.9375	15.25	13.375
MEAN C. D.	7		6.8		6.5	
ANGLE OF ADVANCE	3 05'		12 7' 40"		13 0' 20"	
STROKE.	22"					
TRAVEL.	4"					