

# UNYO MARU. MIDSHIP SECTION.

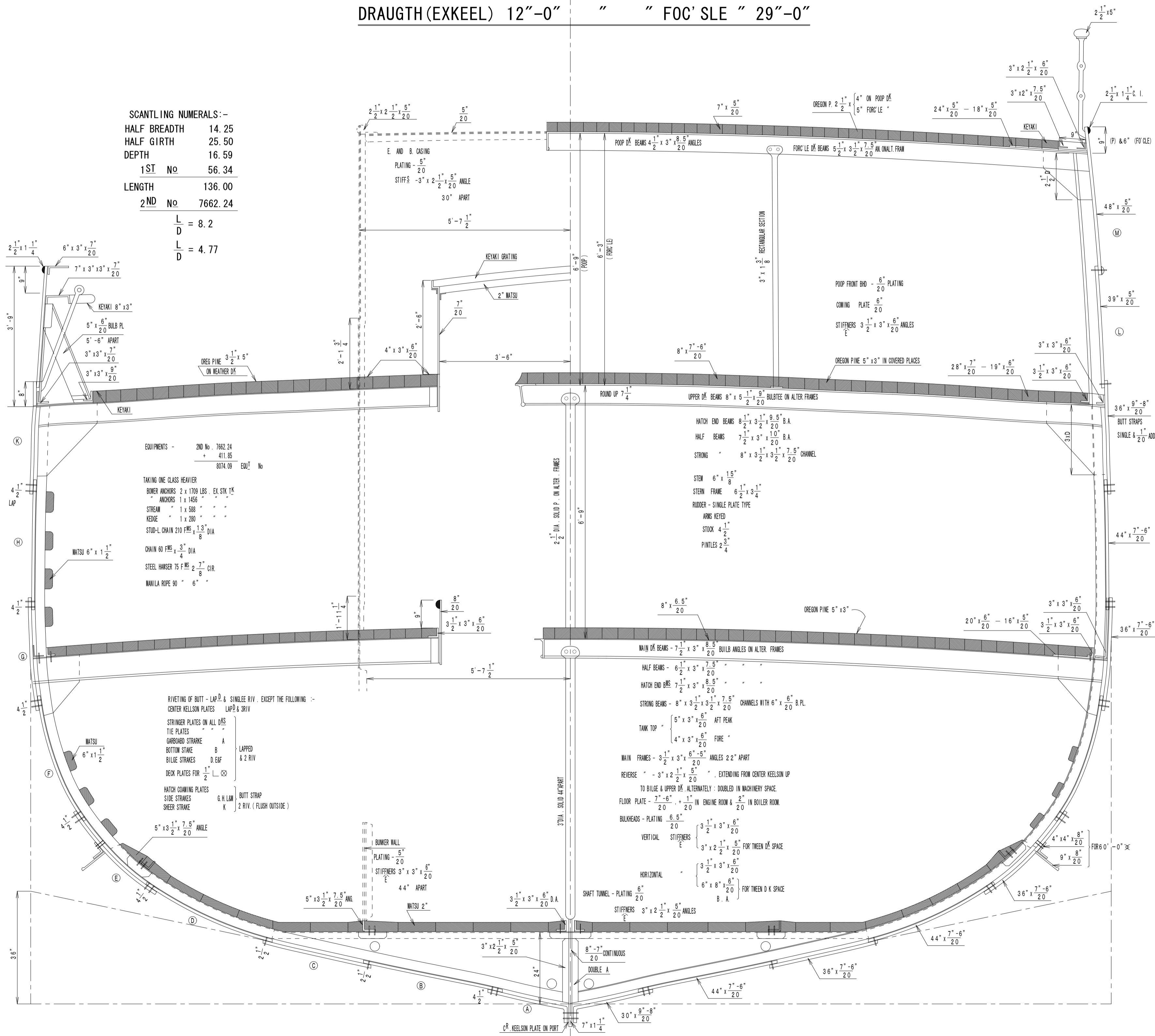
SCALE 1/2 IN. TO ONE FT.

PRINCIPAL DIMENSIONS

LENGTH ON W.L 135<sup>F</sup> 0<sup>IN</sup> HEIGHT OF FOC' SLE D<sup>K</sup> 6<sup>F</sup> -3<sup>IN</sup>  
 BREADTH MD. 28"-6" " " POOP " 6"-9"  
 DEPTH ML<sup>D</sup> 16"-0" LENGTH " " " 29"-6"  
 DRAUGHT (EXKEEL) 12"-0" " " FOC' SLE " 29"-0"

SCANTLING NUMERALS:-  
 HALF BREADTH 14.25  
 HALF GIRTH 25.50  
 DEPTH 16.59  
 1<sup>ST</sup> No 56.34  
 LENGTH 136.00  
 2<sup>ND</sup> No 7662.24

L = 8.2  
 D = 4.77



EQUIPMENTS - 2ND No. 7662.24  
 411.85  
 BOTH ON EDG. No

TAKING ONE CLASS HEAVIER  
 BOMER ANCHORS 2 x 1700 LBS. EX. STR. 1 1/2"  
 ANCHORS 1 x 1450 "  
 STREAM " 1 x 580 "  
 KEELS " 1 x 280 "  
 STOD-L CHAIN 210 PMS. 1 1/2" DIA.  
 CHAIN 40 PMS. 3/4" DIA.  
 STEEL HAMMER 75 F. MS. 2 7/8" CIR.  
 MANILA ROPE 90 " 6"

RIVETING OF BUTT - LAP & SINGLE RIV. EXCEPT THE FOLLOWING:-  
 CENTER KEELSON PLATES LAP & DRIV  
 STRINGER PLATES ON ALL DECK TIE PLATES  
 GARBOARD STRAKE A  
 BOTTOM STRAKE B  
 BILGE STRAKES D, E, F  
 DECK PLATES FOR 1/2" L. CO  
 HATCH COAMING PLATES G, H, L, M  
 SIDE STRAKES K  
 SHEER STRAKE N  
 BUTT STRAP 2 RIV. (PUSH OUTSIDE)

BUNKER WALL  
 PLATING - 5"  
 STIFFERS 3" x 3" x 5"  
 44" APART  
 WATSU 2"

HATCH END BEAMS 1 1/2" x 3" x 5" S.A.  
 HALF BEAMS 1 1/2" x 3" x 10" S.A.  
 STRINGERS 8" x 3 1/2" x 2 1/2" CHANNEL  
 STEM 6" x 1 1/2"  
 STEER FRAME 6 1/2" x 3 1/4"  
 RUDDER - SINGLE PLATE TYPE  
 HORN KEEL 1"  
 STOK 1/2"  
 PINNACLES 2 1/4"

MAIN DECK BEAMS - 7 1/2" x 3" x 8 1/2" BULBES ANGLES ON ALTER FRAMES  
 HALF BEAMS - 6 1/2" x 3" x 7 1/2"  
 HATCH END BEAMS - 1 1/2" x 3" x 10"  
 STRING BEAMS - 8" x 3 1/2" x 2 1/2" CHANNELS WITH 6" x 1 1/2" S. PL.  
 TANK TOP 5" x 3" x 6" AFT PEAK  
 4" x 3" x 6" FORE  
 MAIN FRAMES - 3 1/2" x 3" x 6" ANGLES 22" APART  
 REVERSE - 3" x 2 1/2" x 5" EXTENDING FROM CENTER KEELSON UP TO BILGE & UPPER DECK, ALTERNATELY DOUBLED IN MACHINERY SPACE  
 FLOOR PLATE - 7" x 6" x 1" IN ENGINE ROOM & 2 1/2" IN BOILER ROOM  
 BULKHEADS - PLATING 6.5" x 20" STIFFERS 3 1/2" x 3" x 6" FOR TWEEN DECK SPACE  
 VERTICAL STIFFERS 3" x 2 1/2" x 5" FOR TWEEN DECK SPACE  
 HORIZONTAL STIFFERS 3 1/2" x 3" x 6" FOR TWEEN DECK SPACE  
 SHANT TUNNEL - PLATING 6" x 20" STIFFERS 3" x 2 1/2" x 5" ANGLES